

Digital Cabinets

Roll-in Refrigerator 930 lt - 1 door - remote

ITEM # _____

MODEL # _____

NAME # _____

SIS # _____

AIA # _____


725104 (RI093RE1FR)

 1-door Roll-in Refrigerator
 930lt, 0/+10°C, AISI 304,
 remote

Short Form Specification

Item No. _____

External and internal in AISI 304 stainless steel. Insulation thickness mm60. Right hinged full door with lock. Bottom door gasket adjustable. Remote refrigeration unit; ventilated operating mode. Digital control panel; temperature display; humidity control; hidden evaporator; automatic defrost. Smart Electronic Control: HACCP incorporated; temperature and humidity of food stored can be set by pushing a button. Operating temperature 0/+10° C. For ambient temperatures up to 43°C-

Main Features

- Ventilated cooling for optimal temperature distribution.
- Lift-up control panel to better access main components.
- Digital control panel with temperature display.
- Large digital white-digit display with humidity selection button (3 preset level), internal temperature display and setting, manual activation of defrost cycle and turbo frost cycle (to rapidly cool warm loads).
- The operating temperature can be adjusted from 0 to +10 °C to suit both meat and dairy storage requirements.
- Automatic defrost and automatic evaporation of defrost water.
- One full door.
- Complies with main international certification bodies and is CE marked.
- Inner side protectors to protect the internal walls.
- Adjustable bottom door gasket.
- Simple cooling unit easily accessible from the rear of the appliance.
- Tropicalized unit.

APPROVAL: _____

Construction

- Evaporator and fan are placed outside the cell to provide the maximum storage capacity.
- Lockable door.
- Evaporator cover is easily removable for service.
- Developed and produced in ISO 9001 and ISO 14001 certified factory.
- Remote compressor to suit operating conditions.
- Electrical connection: 220-240V-single phase 50HZ or 220-240V-single phase 60HZ.
- Interior cell and external panel are constructed in 304 AISI stainless steel.
- External panels are in AISI 304 stainless steel for higher level of hygiene.

User Interface & Data Management

- Connectivity ready for real time access to connected appliances from remote and data monitoring (requires optional accessory).

Sustainability

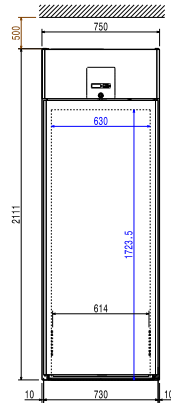


- Finished in top quality materials to ensure durability.
- CFC and HCFC-free insulation.
- Cabinet fitted with up to 60 mm thickness of Cyclopentane insulation for best insulating performance (thermal conductivity: 0,020 W/m*K). CFC and HCFC-free insulation.

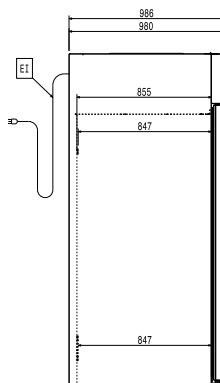
Optional Accessories

- Insulated floor-ramp for 930lt Roll-in PNC 881280 ☐
Refrigerator
- Trolley with tray rack, 20 GN 1/1, PNC 922753 ☐
63mm pitch
- Trolley with tray rack, 16 GN 1/1, PNC 922754 ☐
80mm pitch
- Bakery/pastry trolley with rack PNC 922761 ☐
holding 600x400mm grids for 20 GN
1/1 oven and blast chiller freezer,
80mm pitch (16 runners)

Front

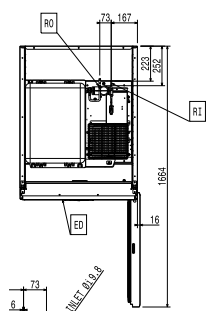


Side



EI = Electrical inlet (power)
 RI = Refrigerant Inlet
 RO = Refrigerant Outlet

Top



Electric

Supply voltage: 220-240 V/1 ph/50-60 Hz

Key Information:

Door hinges:

External dimensions, Width: 750 mm
 External dimensions, Depth: 986 mm
 External dimensions, Height: 2111 mm
 Number and type of doors: 1 Full
 External side panels: 304 AISI
 External top panels: Galvanized Steel
 External door material: 304 AISI
 Internal panels material: 304 AISI

Refrigeration Data

Control type: Electronic
 Operating temperature max.: 10 °C
 Refrigeration type: R134a;R513A;R426A
 Suggested refrigeration power: 605 W
 Condition at evaporation temperature: -10 °C
 Condition at condensation temperature: 55 °C
 Condition at ambient temperature: 32 °C
 Connection pipes (remote) - outlet: 9.8 mm
 Connection pipes (remote) - inlet: 6 mm

ISO Certificates

ISO Standards: ISO 9001; ISO 14001; ISO 45001; ISO 50001